

81°09.000' W

81°08.000' W

81°07.000' W

WGS84 81°06.000' W

28°31.000' N

28°30.000' N

28°29.000' N

28°28.000' N

28°27.000' N

28°31.000' N

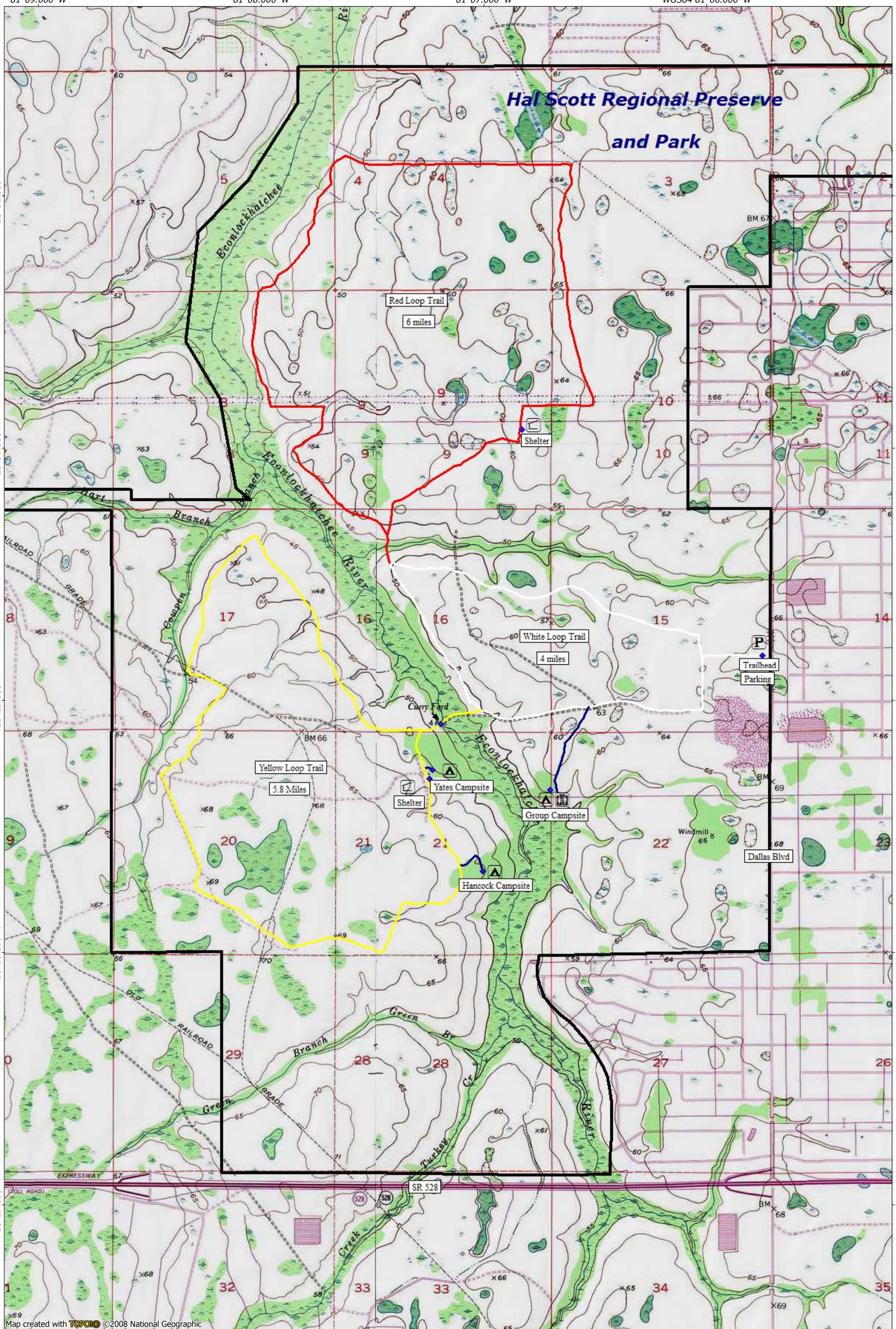
28°30.000' N

28°29.000' N

28°28.000' N

28°27.000' N

Hal Scott Regional Preserve and Park



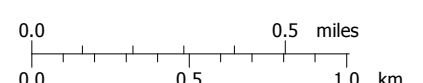
Map created with TOPO! ©2008 National Geographic

81°09.000' W

81°08.000' W

81°07.000' W

WGS84 81°06.000' W



MN TN
6°
12/14/12